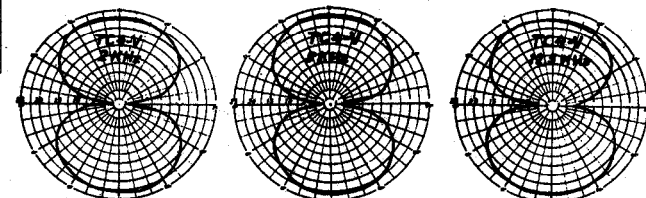
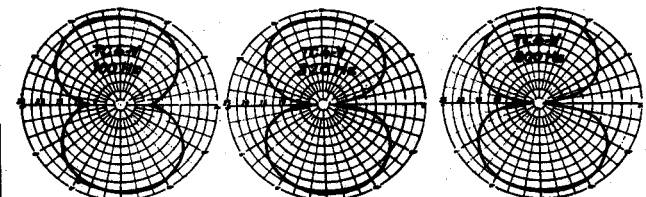
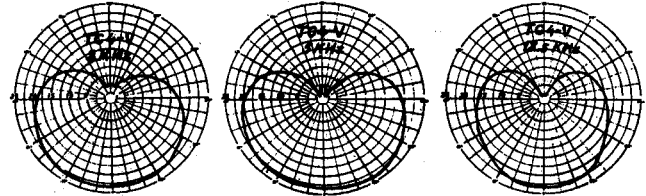
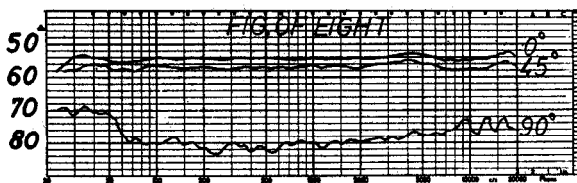
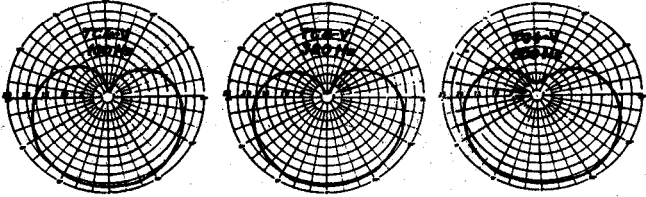
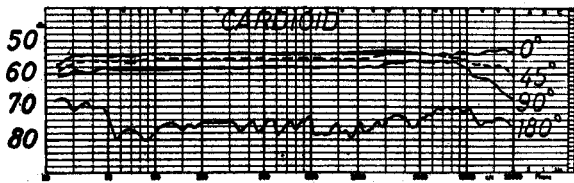
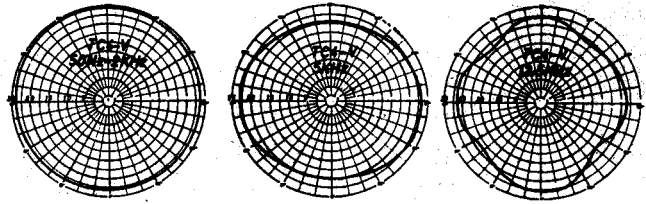
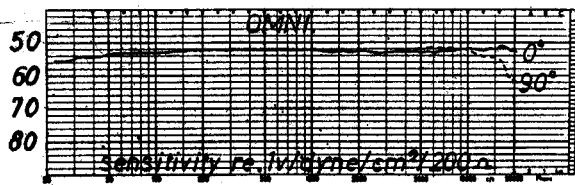


## TYPICAL FREQUENCY RESPONSE CURVES AND POLAR PATTERNS



Heavy duty, sturdy yet compact power supplies (operational at 110/220 V., 50/60 cycle A.C.) assures trouble-free performance. E-5410/S is designed for stereo and will power 2 microphones, E-5410, a single microphone. Power supplies for multi-microphone installations are available on special order. Power supplies of other leading manufacturers may be used if within the maximum voltage range. Connecting cables available from stock.

Unstable HF or bridge circuits are not used. The elimination of vacuum tube microphonics (and tube replacement), no need for warm-up time and fantastically low noise levels offer further advantages to recording and broadcast studio engineers.