

TECHNICAL DATA

Directivity pattern SP-84	Omni-directional	Rikt diagram SP-84
SP-85	Cardioid	SP-85
Directivity index SP-85	12—15 dB	Riktverkan SP-85
Frequency response	30—20.000 Hz	Frekvensområde
Sensitivity (over 200 ohms re. 1 V)	—42 dB/Pa	Känslighet (över 200 ohm rel. 1 V)
Output (over 200 ohms re. 1 V)	8.0 mV/Pa	Utsignal (över 200 ohm rel. 1 V)
Self noise (re. 2×10^{-5} Pa, A-weight)	23 dB	Egenbrus (rel. 2×10^{-5} Pa, A-kurva)
Dynamic range	124 dB	Dynamik
Output impedance (balanced)	200 ohms	Utgångsimpedans (balanserad)
Operating temperature	—20 +50 °C	Temperaturområde
Operating voltage	+10 up to +48 V	Driftspänning
Current consumption (maximum)	1.2 mA	Strömförbrukning (maximum)
Type of battery	See below	Typ av batteri
Operating time (6 hours/day)	50 hours	Batteriets livslängd (6 tim./dag)
F. E. T.	2 x 2N 3819	F. E. T.
Other transistor	1 x 2N 3702	Annan transistor
Dimensions mm	195 x 19	Dimensioner mm
Weight gr	170	Vikt gr
Finish	Satin chrome	Ytbehandling

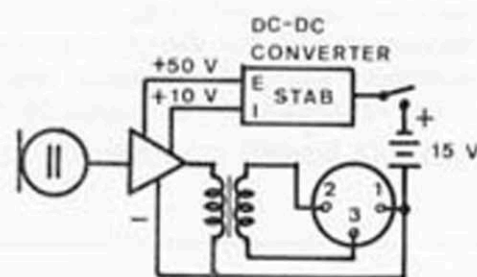
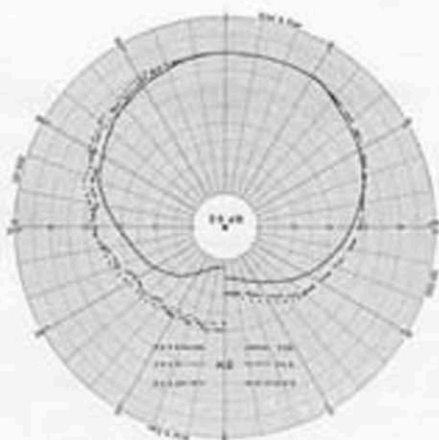
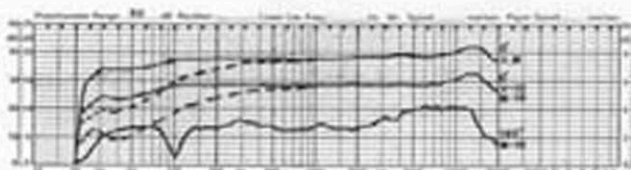
Type of battery:	BEREC	BURGESS	EVEREADY	HELLESENS	MALLORY	TUDOR	IEC INT. NO.
15 volt	B 154	Y 10	504	404	M 504	15 T 1	10 F 15

Accessories and description	Type	Included	Optional
Condenser microphone(omni-directional)	SP-84		
Condenser microphone (cardioid)	SP-85		
Microphone cable	3003	X	
Shockproof boom mount (5/8" x 27 TPI)	1910/18		X
Stand adaptor (5/8" x 27 TPI)	1930/18	X	
Windscreen	V-21		X
Gooseneck	See separate data sheet		X

Typical frequency response curve of
SP-84



Typical frequency response curve of
SP-85



SELF POWERING