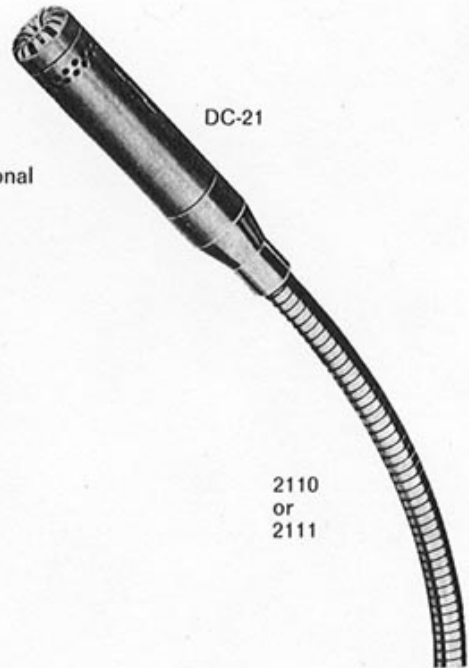


TECHNICAL DATA

Directivity pattern
 Directivity index
 Frequency response
 Sensitivity (over 200 ohms re. 1 V)
 Output (over 200 ohms re. 1 V)
 Self noise (re. 2×10^{-5} Pa, A-weight)
 Dynamic range
 Output imp. (balanced)
 Operating temperature
 Operating voltage
 Current consumption (maximum)
 Transistor (F.E.T.)
 Dimensions
 Weight
 Finish

| DC-21 | DC-20 |
|------------|---|
| Cardioid | Omni directional |
| 10—15 dB | |
| | 30—20,000 Hz |
| — 44 dB/Pa | — 46 dB/Pa |
| 6.3 mV/Pa | 5.0 mV/Pa |
| 25 dB | 26 dB |
| 122 dB | 124 dB |
| | 200 ohms |
| | —20 +50 °C |
| | + 48 + ⁶ / ₈ volt |
| | 0.8 mA |
| | 2N 3819 |
| | 70 x 18 mm |
| | 58 gr |
| | Blasted chrome |



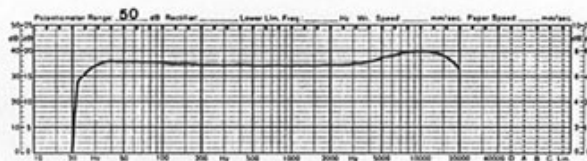
2110
 or
 2111

| Accessories and description | Type | Included | Optional |
|---|-------------------------|----------|----------|
| Condenser microphone (Omni directional) | DC-20 | | |
| Condenser microphone (Cardioid) | DC-21 | | |
| Stand adaptor ($\frac{5}{8}$ " x 27 TPI) | 4310 | X | |
| Shockproof boom mount ($\frac{5}{8}$ " x 27 TPI) | 1910/18 | | X |
| Shockproof boom mount (M 12 x 0.75) | 2115 | | X |
| Windscreen | V-21 | | X |
| Gooseneck | See separate data sheet | | X |
| Mains operated power supplies | See separate data sheet | | X |
| Battery operated power supplies | See separate data sheet | | X |
| Carrying case | 1021 | | X |

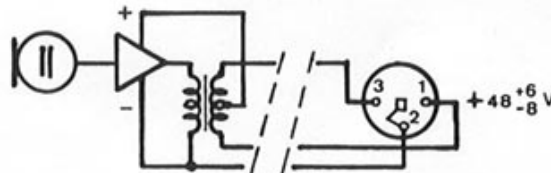
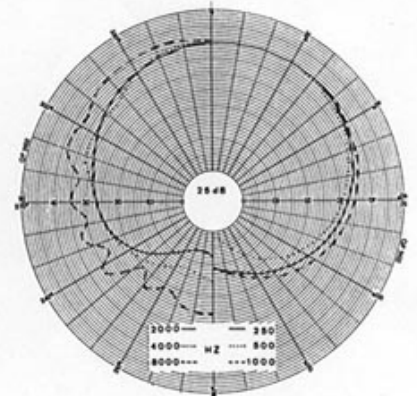
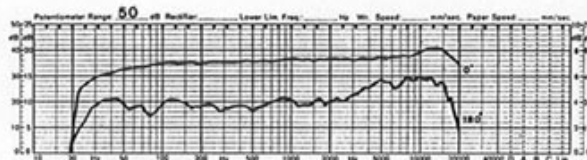


2110
 or
 2111

Typical frequency response curve of DC-20



Typical frequency response curve of DC-21



SYMSI 48